


MAIN PARTICULARS
LENGTH OVERALL = 115.35 m.
LENGTH BETW. P.P. = 108.00 m.
BREADTH MOULDED = 17.90 m.
DEPTH TO MAIN DECK = 8.80 m.
DRAUGHT (SUMMER) = 6.871 m.
IMO NO = 9083067

CLASS : BUREAU VERITAS : I + HULL + MACH, UNRESTRICTED NAVIGATION
LIVE STOCK CARRIER, + AUT-UMS
FRAME SPACING = 700 mm.

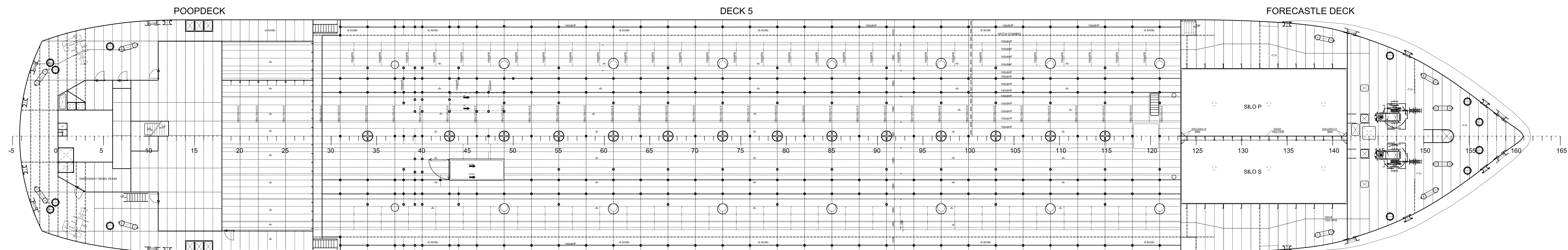
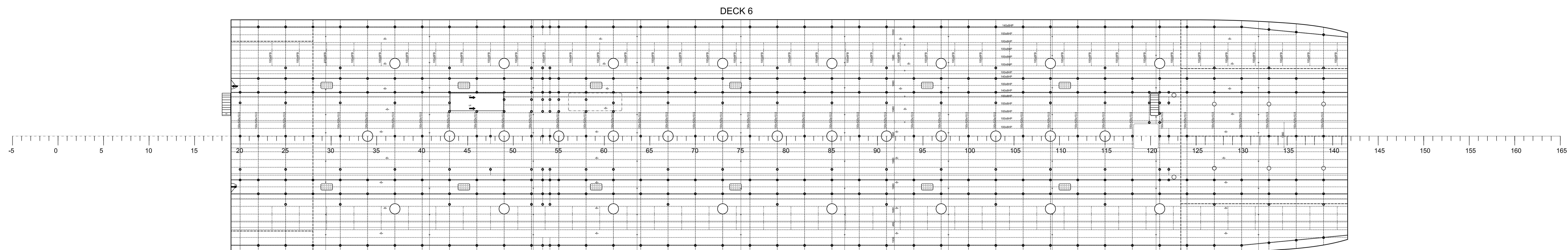
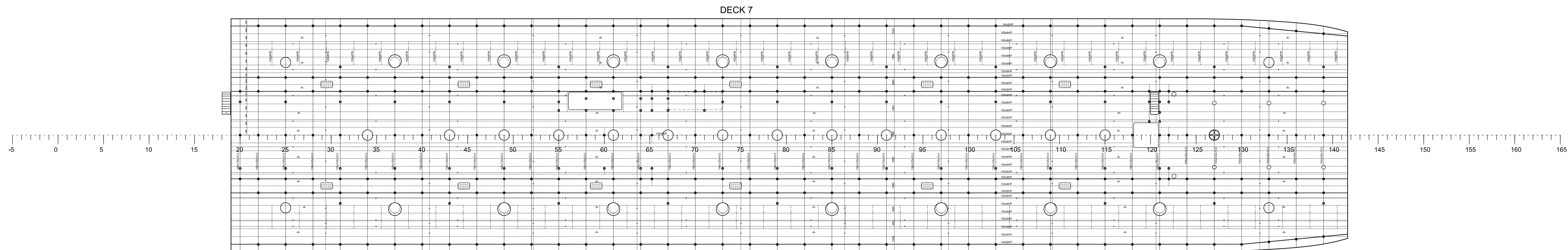
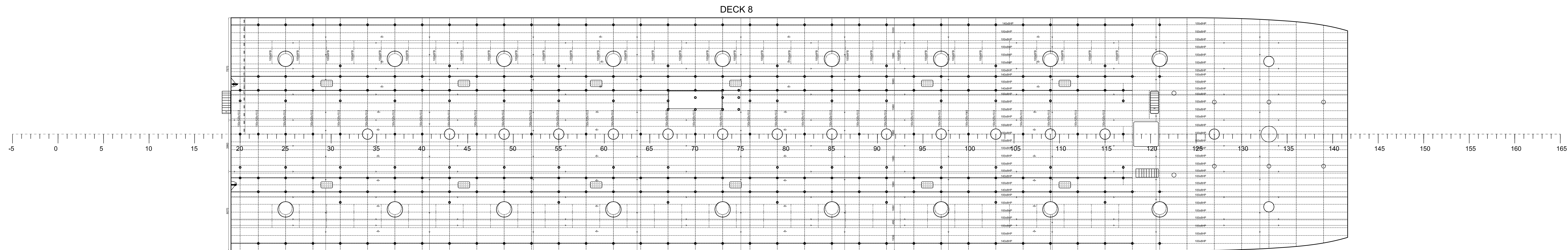
Vessel is converted from Container Ship.
For details of existing parts not shown in this plan, please use original drawings wilt this plan.
All Secondary pillars are Ø88.9x7.6

1	19.03.2013	R. S. GÖKE	Updated	G. GÖKE
NO.	DATE	REVISED BY	REVISION	CHECKED BY



MAVI EGE MÜHENDISLIK LTD. STI
POSTANE MAH. TUNÇ SOK NO:33 D:01
TUZLA-İSTANBUL- TÜRKİYE
TEL- FAX : +90 (216) 446 44 96 - + 90 (216) 395 21 84
Web page : www.mavi-ege.net e-mail : tasarim@mavi-ege.net

PROJECT: M/V HAIDAR
LIVE STOCK CARRIER
TITLE: LONGITUDINAL SECTION & DECKS
CONSTRUCTION
OWNER TAMARA SHIPPING SHIPYARD SEFINE SHIPYARD / YALOVA / TURKEY
DESIGNED BY GÖKHAN GÖKE
CAD/CAE HURREM ALTINBILEK
CONTROL RAZIYE SABAN GÖKE
HULL NO CLASS DATE SCALE DRW'N SHEET
- B.V. 17.01.2013 1/100 LSC1-C-01 01/03




<u>MAIN PARTICULARS</u>	
LENGTH OVERALL	= 115.35 m.
LENGTH BETW. P.P.	= 108.00 m.
BREADTH MOULDED	= 17.90 m.
DEPTH TO MAIN DECK	= 8.80 m.
DRAUGHT (SUMMER)	= 6.871 m.
	= 9083067

UNRESTRICTED BUREAU VERITAS : I + HULL + MACH, UNRESTRICTED NAVIGATION
LIVE STOCK CARRIER, + AUT-UMS
FRAME SPACING = 700 mm.

Vessel is converted from Container Ship.
For details of existing parts not shown in this plan, please use original drawings with this plan.

All Secondary pillars are Ø88.9x7.6

1	19.03.2013	R.S.GÖKE		Updated		G. GÖKE			
NO.	DATE	REVISED BY		REVISION		CHECKED BY			

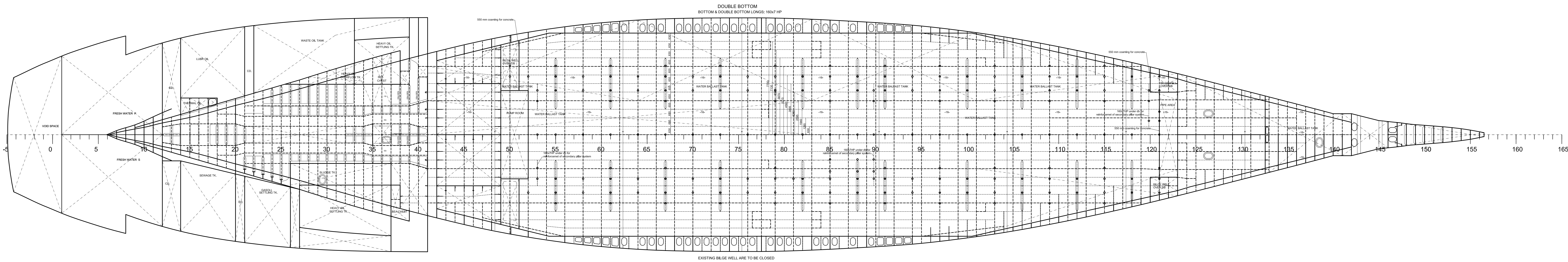
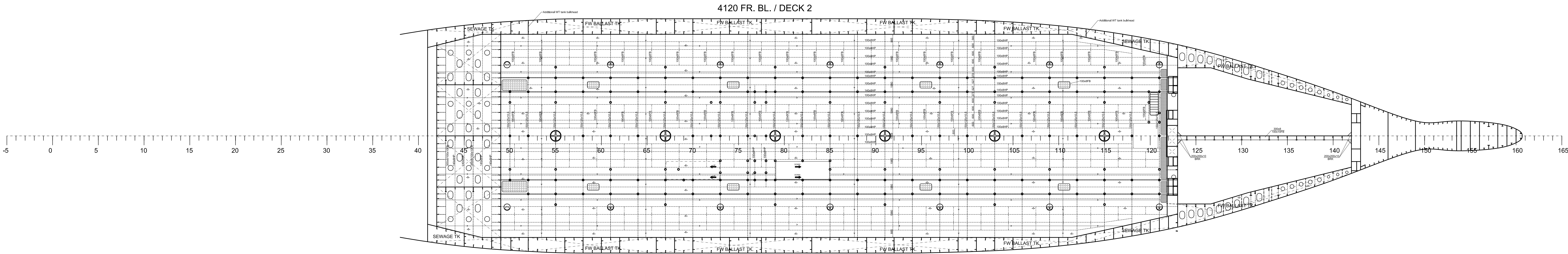
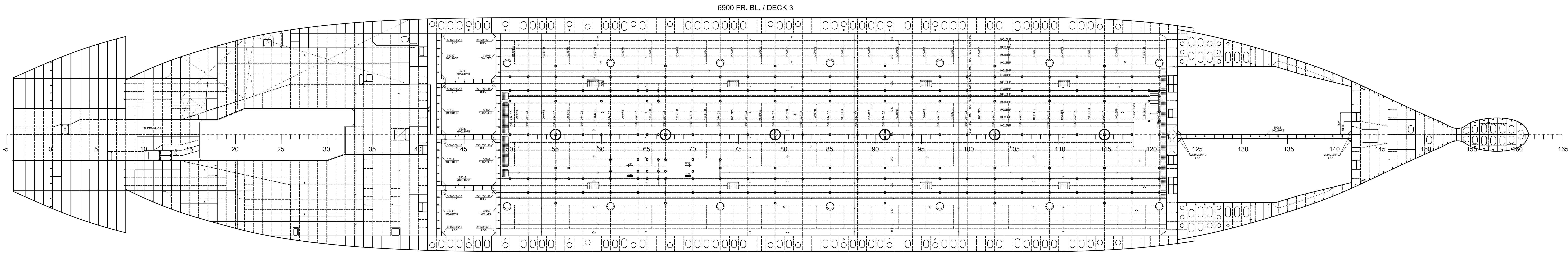
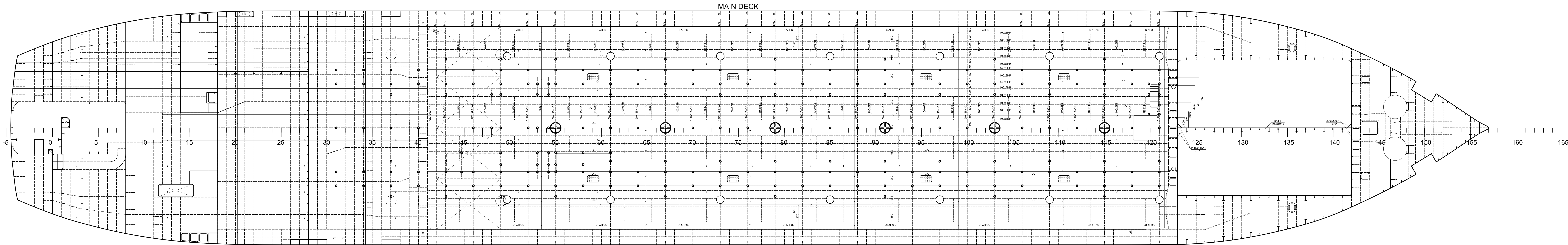


MAVI EGE MÜHENDİSLİK LTD. STI

POSTANE MAHI TUNC SOY NO-33 D/1
TUZLA İSTANBUL - TÜRKİYE


TEL-FAX : +90 (216) 468 44 40 / +90 (216) 391 21 84
Web page : www.maviengine.com.tr e-mail : istanbul@maviengine.net

PROJECT:				M/V HAIDER			
				LIVE STOCK CARRIER			
TITLE:				LONGITUDINAL SECTION & DECKS CONSTRUCTION			
OWNER		TAMARA SHIPPING		SHIPYARD		SIFINE SHIPYARD / YALOVA / TURKEY	
DESIGNED BY		GOKHAN GÖKKE					
CAD/CAR		HUREM ALTINTILBEK					
CONTROL		RAZIYE SABAH GÖKE					
HULL NO	CLASS	DATE	SCALE	DRAWN	SHEET		
-	B.V.	17.01.2013	1/100	LSCI-C-01	02/03		



MAIN PARTICULARS
LENGTH OVERALL = 115.35 m.
LENGTH BETW. P.P. = 108.00 m.
LENGTH BETW. P.P. = 17.90 m.
BREADTH MOULDED = 8.80 m.
DEPTH TO MAIN DECK = 6.871 m.
DRAUGHT (SUMMER) = 9083067
IMO NO
CLASS : BUREAU VERITAS : I + HULL + MACH, UNRESTRICTED NAVIGATION
LIVE STOCK CARRIER, + AUT-UMS
FRAME SPACING = 700 mm.

Vessel is converted from Container Ship.
For details of existing parts not shown in this plan, please use original drawings with this plan.
All Secondary pillars are Ø88.9x7.6

1	19.03.2013	R. S. GÖKE	Updated	G. GÖKE
NO	DATE	REVISED BY	REVISION	CHECKED BY
<div>MAVI EGE MÜHENDİSLİK LTD. STİ</div>				
POSTANE MAH. TUNÇ SOK. NO:33 E:01 TUZLA-İSTANBUL- TÜRKİYE TEL-FAX : +90 (216) 446 44 96 - + 90 (216) 395 21 84 Web page : www.mavi-ege.net e-mail : tasarin@mavi-ege.net				
M/V HAIDAR LIVE STOCK CARRIER				
LONGITUDINAL SECTION & DECKS CONSTRUCTION				
OWNER		SHIPYARD		
TAMARA SHIPPING		SEFINE SHIPYARD / YALOVA / TURKEY		
DESIGNED BY		GÖKHAN GÖKE		
CAD/CAE		HURREM ALTINBILEK		
CONTROL		RAZIYE SABAN GÖKE		
HULL NO	CLASS	DATE	SCALE	DRWN
	B.V.	17.01.2013	1/100	LSC1-C-01
				SHEET
				03/03